



# School Uniform Policy

<b>Recommended by:</b>	Assistant Principal
<b>Recommendation Date</b>	8 <sup>th</sup> December 2025
<b>Ratified by:</b>	Chair of Governors
<b>Signed:</b>	<i>J Goodman</i>
<b>Position on the board</b>	Chair of Governors
<b>Ratification Date</b>	10 <sup>th</sup> December 2025
<b>Next Review:</b>	December 2026
<b>Policy Tier (Central/Hub/School):</b>	School

### **Years 7 to 11**

Students in Years 7-11 are expected to wear the school uniform which is in-keeping with the smart, professional image we want all in our school community to portray.

#### **Uniform Suppliers**

Gogna Schoolwear and Sports  
Junction 2 Industrial Estate  
Unit 1B, Demuth Way  
Oldbury  
West Midlands  
B69 4LT

Gogna Schoolwear and Sports  
67/69 Rookery Road  
Handsworth  
Birmingham  
B21 9QU

Telephone No: 0121 523 5572  
Email: [sales@gogna.me](mailto:sales@gogna.me)  
Website: [www.gogna.me](http://www.gogna.me)

CC Uniforms Ltd  
82 Kings Square  
West Bromwich  
West Midlands  
B70 7NW

Telephone No: 0121 448 9199  
Email: [ccuniformsltd@hotmail.com](mailto:ccuniformsltd@hotmail.com)  
Website: [www.ccuniforms.co.uk](http://www.ccuniforms.co.uk)

or

The School Uniform Merchant  
127 High Street  
Princes End  
Tipton  
DY4 9JE

Telephone No: 0121 520 3120  
Email: [info@theschooluniformmerchant.co.uk](mailto:info@theschooluniformmerchant.co.uk)  
Website: [www.theschooluniformmerchant.co.uk](http://www.theschooluniformmerchant.co.uk)

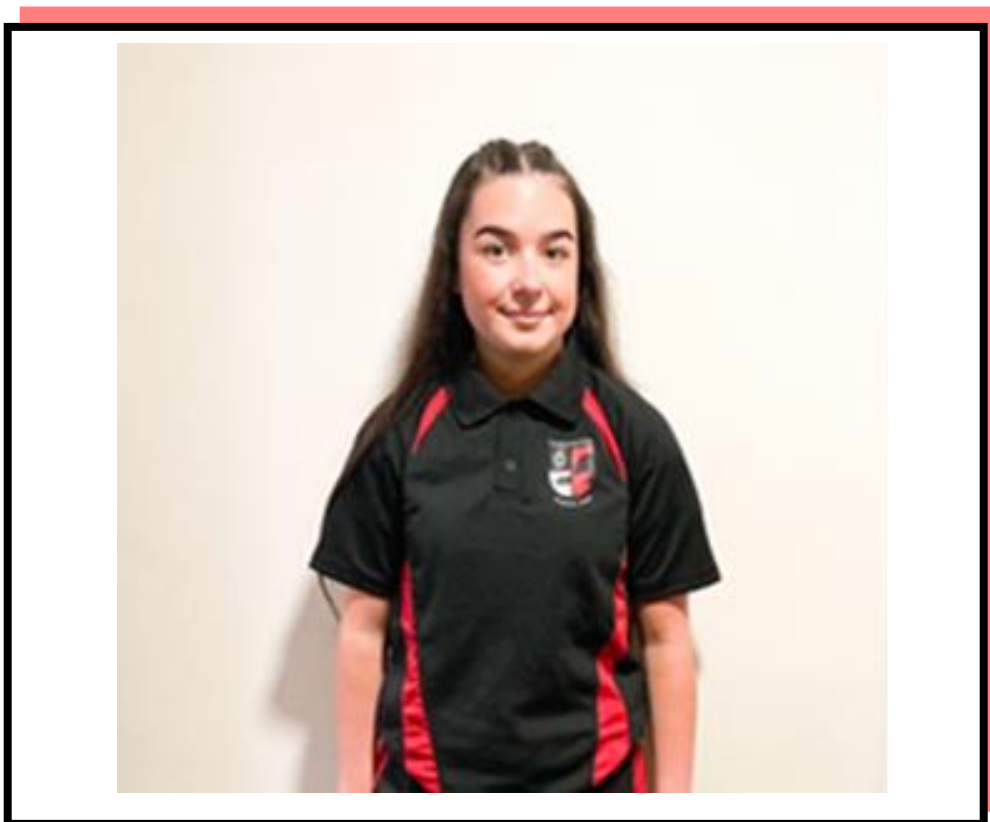
Item	Expectation	Not Allowed	Purchase From
Blazer <b>essential</b>	Black school blazer with the Gospel Oak School Logo		GOGNA, CC Uniforms or The School Uniform Merchant.
Shirt <b>essential</b>	A <b>formal white</b> shirt buttoned to neck		General retailer
School Tie <b>essential</b>	Gospel Oak School Tie		GOGNA, CC Uniforms or The School Uniform Merchant.
Jumper <b>optional</b>	A <b>plain black knitted V-neck</b> jumper	<ul style="list-style-type: none"> <li>No logos</li> <li>No sweatshirts</li> <li>No hoodies</li> </ul>	General retailer
Trousers / Skirt <b>essential</b>	<ul style="list-style-type: none"> <li><b>Formal black</b> trousers</li> <li><b>Formal knee length black</b> skirt</li> <li><b>Black or flesh- coloured tights or white/black socks</b> should be worn</li> </ul>	<ul style="list-style-type: none"> <li>No chinos, jeans, leggings, jeggings, joggers or skinny trousers.</li> <li>No stretchy or lycra material.</li> <li>No external buckles or logos.</li> </ul>	General retailer
Shorts <b>optional summer term</b>	<b>Formal tailored black</b> school shorts	No cycling, cargo or denim shorts.	General retailer
Shoes	<b>Formal black polishable</b> shoes <i>(in bad weather students are allowed to walk to school in appropriate footwear, but change when they arrive)</i>	<ol style="list-style-type: none"> <li>No logo or branding on trainers or pumps</li> <li>No heels over 2cm</li> <li>No converse/Vans</li> <li>No boots</li> </ol>	General retailer



BOYS		GIRLS	
✓	✗	✓	✗

### **Gospel Oak PE Kit, including Dance**

PE clothing, described below, should only be worn during PE lessons/Enrichment or when representing the school in sporting events.



**Sports Kit** (All items **must** be clearly labelled with the student's name)

<b>Girls' PE kit</b>	<b>Boys' PE kit</b>
Gospel Oak polo shirt	Gospel Oak polo shirt
Plain Black midlayer	Plain Black midlayer
Plain black shorts, leggings or tracksuit bottoms (fashion shorts and tracksuit bottoms are not permitted. The tracksuit bottoms should be predominately black with no large logos or writing)	Plain black shorts, leggings or tracksuit bottoms (fashion shorts and tracksuit bottoms are not permitted. The tracksuit bottoms should be predominately black with no large logos or writing)
Black football socks or sports socks	Black football socks or sports socks
Non-slip socks required for gymnastics (optional)	Non-slip socks required for gymnastics (optional)
Training shoes (not fashion pumps). Astro turf trainers or rubber moulded boots are the most appropriate for the field and 3G astro turf facility.	Training shoes (not fashion pumps). Astro turf trainers or rubber moulded boots are the most appropriate for the field and 3G astro turf facility.

If you already have the branded Gospel Oak midlayer, you are still welcome to wear it. From now on, a branded midlayer is not required and any plain black midlayer is acceptable. We are not expecting parents/carers to buy a new one.

## **Hairstyles, Jewellery and Make-up**

### **Permitted**

- Students are allowed to wear one small pair of plain metal (silver/gold) stud earrings in the lobe of the ear
- Wristwatch

### **Not Permitted**

- A smartwatch
- Rings, bracelets, necklaces and wristbands
- No nail polish or false nails
- Heavy make-up
- False eyelashes
- Facial piercings of any description

### **Hairstyles**

Hair should be neat, tidy and safe with no extremes of fashion permitted. Where hair is coloured or extensions added, it must be of natural shades only.

*The school reserves the right to sanction students for not following the appropriate dress code for the school which will include isolation. Where possible the school will provide alternatives to incorrect uniform. Persistent failure to comply with the school uniform and equipment expectations will incur more severe sanctions.*

### **Sixth Form Dress Code**

Students in Sixth Form are expected to wear business wear which is in-keeping with the smart, professional image we want all in our school community to portray.

#### **Male students**

- Jacket, smart tailored cardigan or smart jumper
- Trousers
- Shirt-long or short sleeves with a collar (no large motifs). Coloured or patterned T-shirts are not to be worn under shirts
- Shoes (leather or leather looking)

#### **Female students**

- Jacket, smart tailored cardigan or smart jumper
- Skirt (knee length)
- Trousers
- Smart dress
- Shirt/Blouse with a collar (no large motifs). Coloured or patterned T-shirts are not to be worn under shirts.
- Shoes (leather or leather looking)

Students studying BTEC sport must attend school following the dress code and then change into their kit for practical lessons only.

The following items of clothing are not allowed: hats, trainers, canvas shoes, high heels, flip-flops, shorts, thin strapped tops, sun dresses, leggings, jeggings, any type of, tracksuit bottoms, sweatshirts, hoodies (unless used as a coat) and denim shirts.

## **Hairstyles, Jewellery and Make-up**

### **Permitted**

- Students are allowed to wear one small pair of plain metal (silver/gold) stud earrings in the lobe of the ear
- Wristwatch

### **Not Permitted**

- A smartwatch
- Rings, bracelets, necklaces and wristbands
- No nail polish or false nails
- Heavy make-up
- False eyelashes
- Facial piercings of any description

### **Hairstyles**

Hair should be neat, tidy and safe with no extremes of fashion permitted. Where hair is coloured or extensions added, it must be of natural shades only.

*The school reserves the right to send students home to change if they are not conforming with our Uniform Policy.*